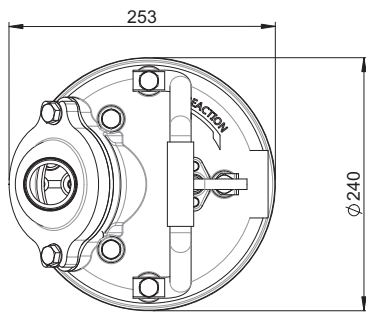
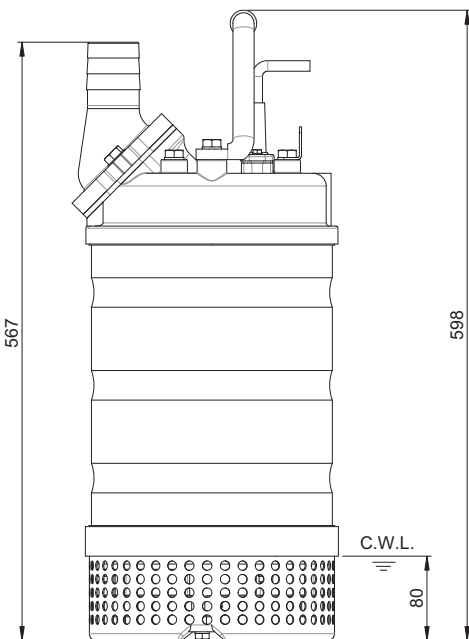


Shaft Speed : 2850 rpm

Outlet : 50mm, 2in



| OUTPUT | HEAD | FLOW |
|--------|-------------------|-----------------------|
| 2.2 kW | Rated : 15m, 49ft | Rated : 5 l/s, 79 gpm |
| 3 HP | Max : 26m, 85ft | Max : 8 l/s, 132 gpm |



Weight : 35kg / 77 lbs

| | | |
|-------------------------|-------------|---------------------------------------------------------------|
| Pump Type | | Electric Submersible Pumps |
| | | 3-Phase |
| Motor | Type | Induction Motor |
| | Poles | 2 Pole |
| | Insulation | Class F |
| | Protector | Circle Thermal Protector |
| | Starter | D.O.L. |
| Lubricant | | Food Grade (ISO VG32) |
| Impeller Type | | Opened |
| Shaft Seal | | Double Mechanical Seal Silicon Carbide VS Ceramic / Carbon |
| Bearings | | C3 Shielded ball bearings |
| Cable | | H07BQF Length: 20m (66ft) or longer upon request. |
| Materials | Pump Casing | Gray Iron |
| | Impeller | Chromium Iron |
| | Motor Frame | Stainless Steel |
| | Motor Shaft | Stainless Steel |
| | Strainer | Stainless Steel |
| Max. Liquid Temperature | | 104°F (40°C) |
| Max. Submersion Depth | | 66ft (20m) |
| pH Range | | pH 5 - pH 8 |