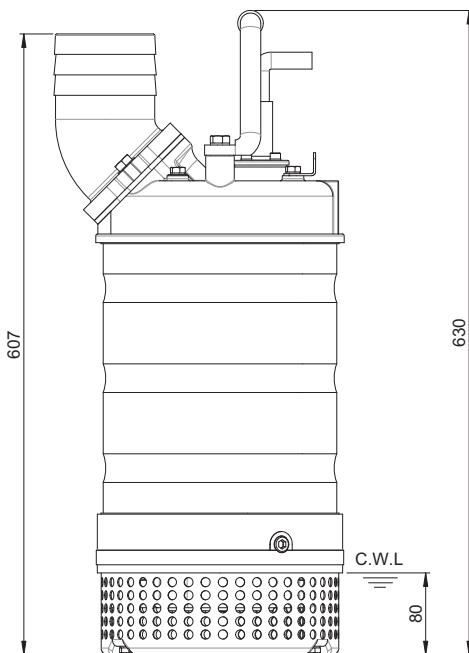
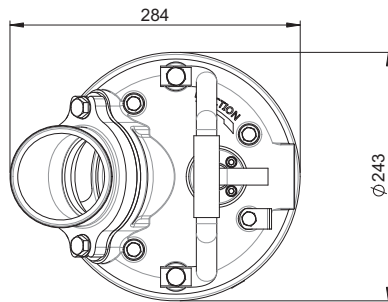


Shaft Speed : 2850 rpm

Outlet : 100mm, 4in



Weight : 42kg / 93 lbs

| OUTPUT | HEAD | FLOW |
|--------|-------------------|-------------------------|
| 3.7 kW | Rated : 10m, 33ft | Rated : 17 l/s, 264 gpm |
| 5 HP | Max : 18m, 59ft | Max : 24 l/s, 380 gpm |

| | | |
|-------------------------|--------------------------------------------|--------------------------|
| Pump Type | Electric Submersible Pumps | |
| | 3-Phase | |
| Motor | Type | Induction Motor |
| | Poles | 2 Pole |
| | Insulation | Class F |
| | Protector | Circle Thermal Protector |
| | Starter | D.O.L. |
| Lubricant | Food Grade (ISO VG32) | |
| Impeller Type | Opened | |
| Shaft Seal | Double Mechanical Seal | |
| | Silicon Carbide VS Ceramic / Carbon | |
| Bearings | C3 Shielded ball bearings | |
| Cable | H07BQF | |
| | Length: 20m (66ft) or longer upon request. | |
| Materials | Pump Casing | Gray Iron |
| | Impeller | Chromium Iron |
| | Motor Frame | Stainless Steel |
| | Motor Shaft | Stainless Steel |
| | Strainer | Stainless Steel |
| Max. Liquid Temperature | 104°F (40°C) | |
| Max. Submersion Depth | 66ft (20m) | |
| pH Range | pH 5 - pH 8 | |